



Amy Johnson Court, Mildenhall, Suffolk, IP28 7QR

Rent - £1,390 PCM Deposit - £1,603

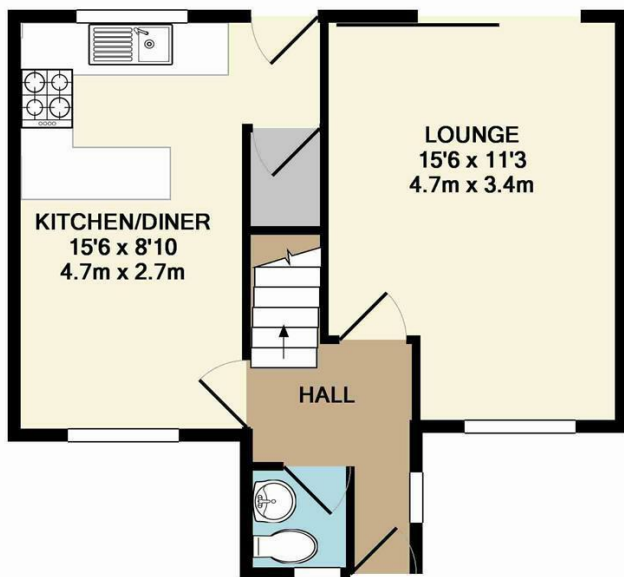
In the desirable Amy Johnson Court in Mildenhall, this charming three-bedroom detached house offers a perfect blend of comfort and convenience.

The house features two well-appointed bathrooms, alongside each of the three bedrooms being generously sized.

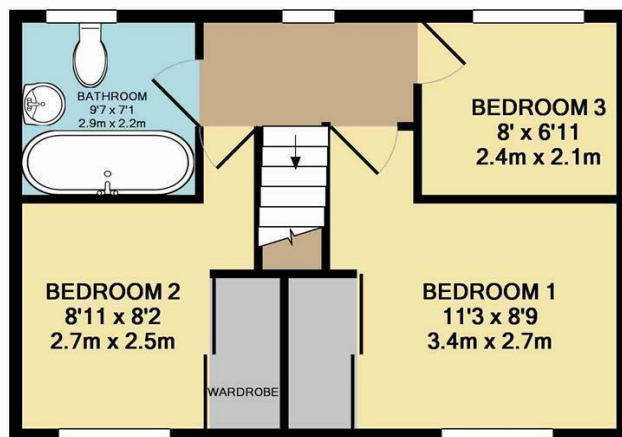
- DETACHED HOUSE
- 3 BEDROOMS
- SPACIOUS LOUNGE
- FAMILY BATHROOM & CLOAKROOM
- GARAGE, PARKING & AN ENCLOSED GARDEN
- CLOSE TO RAF BASES
- GAS HEATING & ENERGY RATING - D
- APPROXIMATE SIZE - 760 SQ FT
- PETS CONSIDERED
- AVAILABLE NOW



Council Tax Band: C - EPC Rating: D 58



GROUND FLOOR
APPROX. FLOOR
AREA 396 SQ.FT.
(36.8 SQ.M.)



1ST FLOOR
APPROX. FLOOR
AREA 364 SQ.FT.
(33.9 SQ.M.)

TOTAL APPROX. FLOOR AREA 760 SQ.FT. (70.6 SQ.M.)

Whilst every attempt has been made to ensure the accuracy of the floor plan contained here, measurements of doors, windows, rooms and any other items are approximate and no responsibility is taken for any error, omission, or mis-statement. This plan is for illustrative purposes only and should be used as such by any prospective purchaser. The services, systems and appliances shown have not been tested and no guarantee as to their operability or efficiency can be given

Made with Metropix ©2014

